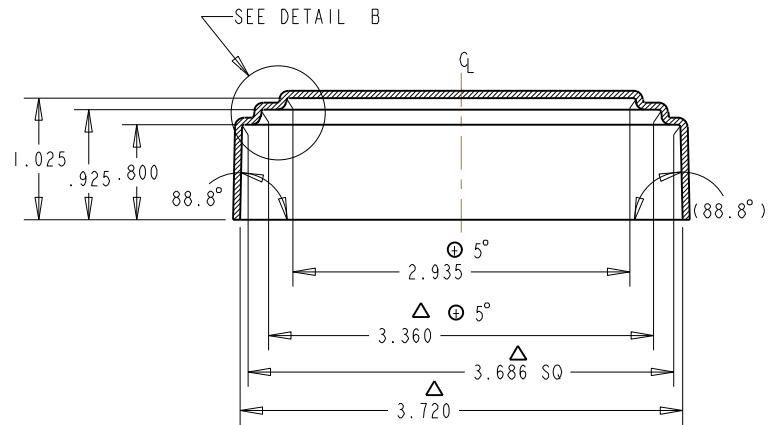
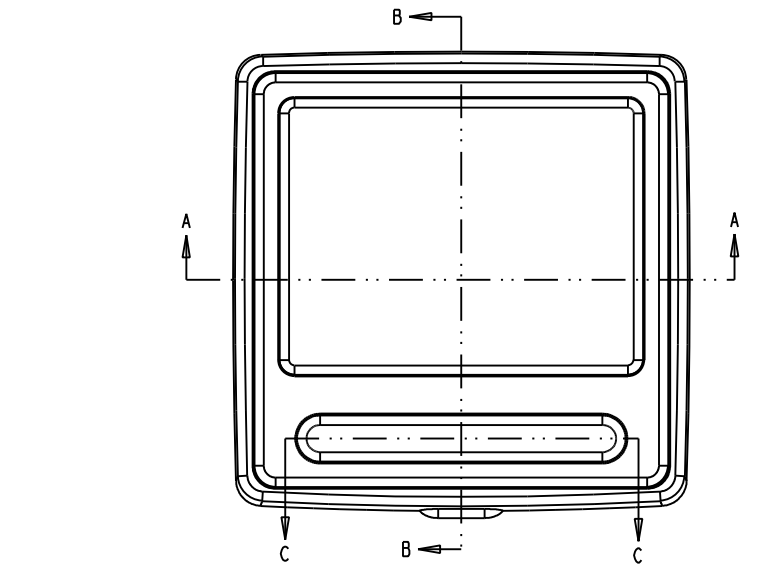
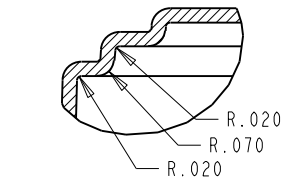
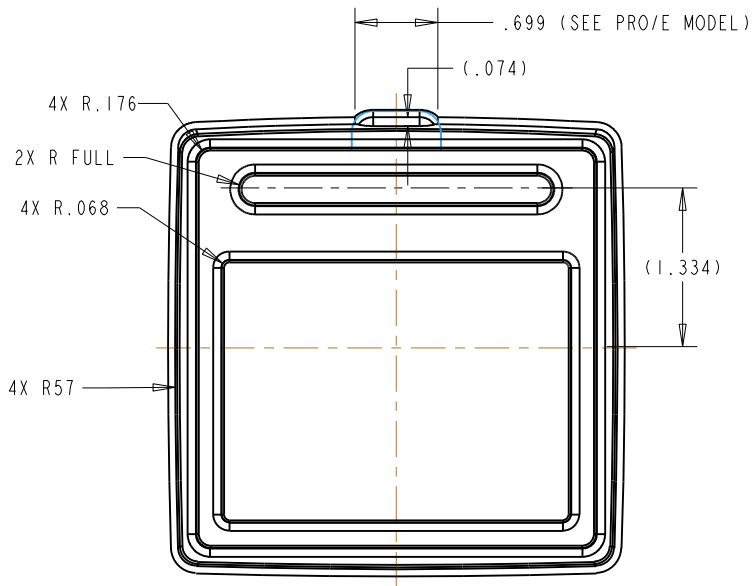


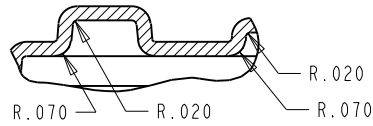
THIS DRAWING IS THE PROPERTY OF VEETHREE ELECTRONICS & MARINE, LLC, SARASOTA, FLORIDA. ALL RIGHTS ARE RESERVED. THIS DRAWING OR ANY INFORMATION IT CONTAINS MAY NOT BE COPIED, REPRODUCED, DISCLOSED TO OTHERS, OR USED WITHOUT THE WRITTEN PERMISSION FROM VEETHREE ELECTRONICS & MARINE, LLC. THIS DRAWING MUST BE RETURNED UPON REQUEST.



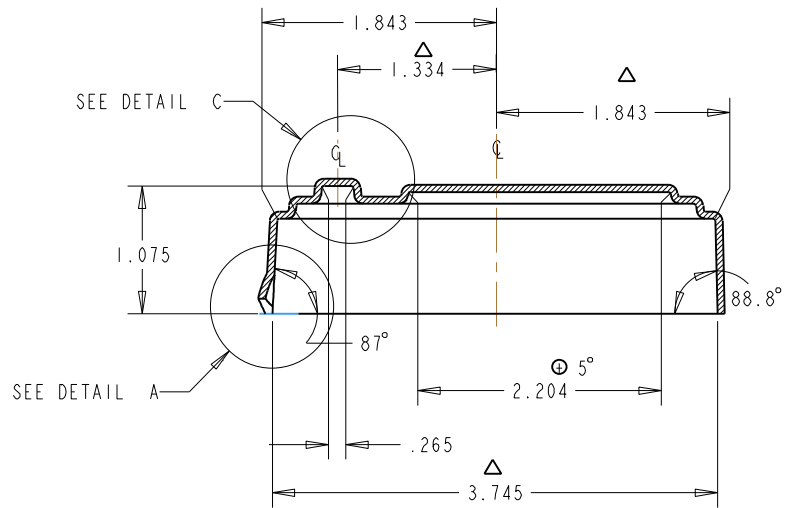
SECTION A-A



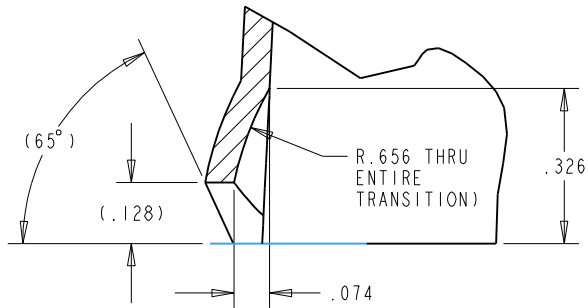
DETAIL B  
(RADIUSSES ARE ALL AROUND)  
SCALE 2.000



DETAIL C  
(RADIUSSES ARE ALL AROUND)  
SCALE 2.000

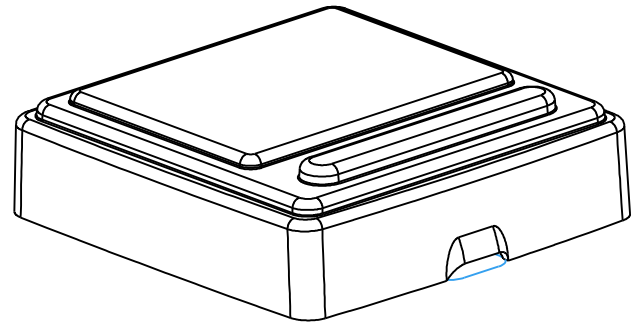


SECTION B-B  
(ROTEDED 90° CW)

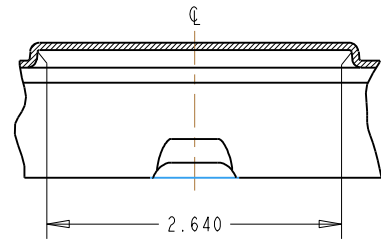


DETAIL A  
(SEE PRO/E MODEL)  
SCALE 4.000

REV	DESCRIPTION	DATE	CHECKED	ECN'S
A	RELEASE FOR QUOTES	09/19/11	MG	11-0344
B	REVISED NOTE 3	10/03/11	MG	11-0371
1	PRODUCTION RELEASE, REVISED SECTION A-A, B-B AND DETAIL A	12/05/11	MG	11-0428
2	REVISED MATERIAL NOTE	04/03/12	MG	12-0135



ISOMETRIC VIEW  
SCALE 1.000



SECTION C-C

NOTE:

- 1) "Δ" DENOTES CRITICAL CHARACTERISTICS.
- 2) MATERIAL : ABS PLASTIC SHEET .060 THICK, SMOOTH TEXTURE, COLOR WHITE. (HRA222-WH4C030U OR EQUIVALENT).
- 3) PARTS ARE TO BE VACUUM FORMED FREE OF OIL, GREASE, DIRT, ETC. VISIBLE POROSITY, WEBS, VOIDS, AND BLEMISHES ARE NOT PERMITTED ON EXTERNAL SURFACES OF PART.
- 4) DRAFT ANGLES SHALL BE 5 DEGREE UNLESS OTHERWISE SPECIFIED.
- 5) THE USE OF SILICONE BASED MOLD RELEASING AGENTS, OR MOLD RELEASES CONTAINING SILICONE, ARE NOT PERMITTED.
- 6) SEE PRO-E FILE FOR DIMENSIONS NOT SHOWN.
- 7) MATERIAL TO BE UV RESISTANT IN ACCORDANCE WITH SAE J-2020, 500 HOURS.
- 8) NO MATERIAL SUBSTITUTIONS SHALL BE MADE WITHOUT PRIOR WRITTEN APPROVAL FROM VEETHREE ENGINEERING.
- 9) SURFACE TEXTURE TO BE SMOOTH AND WITHOUT PERFORATIONS.
- 10) PARTS ARE TO BE PACKAGED IN A MANNER AS TO PREVENT CONTAMINATION, PHYSICAL DAMAGE, AND OTHER DETERIORATIVE EFFECTS DURING SHIPPING, HANDLING, AND SUBSEQUENT STORAGE.

ITEM NO.	DRAWING NO.	PART NO.	QTY.	DESCRIPTION				
MATERIAL			COVER, PROTECTIVE VEECAN	DEPT.		INITIALS	DATE	
SEE NOTES				DRAWN		MG	091911	
FINISH				REVISED		MG	040312	
SEE NOTES				CHECKED				
				ENG. MGR.				
DIMENSIONS ARE IN INCHES/METRIC IN ( ) TOLERANCES ARE AS FOLLOWS AND COMPLY WITH ANSI Y14.5M SPECS UNLESS OTHERWISE SPECIFIED				SHEET SIZE				C
FRACTIONS ±1/32		TWO DEC. ±.01(.254)		SHEET 1 OF 1				
ANGLES ± 1 DEG.		THREE DEC. ±.005(.127)		69449.PART.				
SCALE :		1.000		PART NO.		REV.		
				69449		2		