

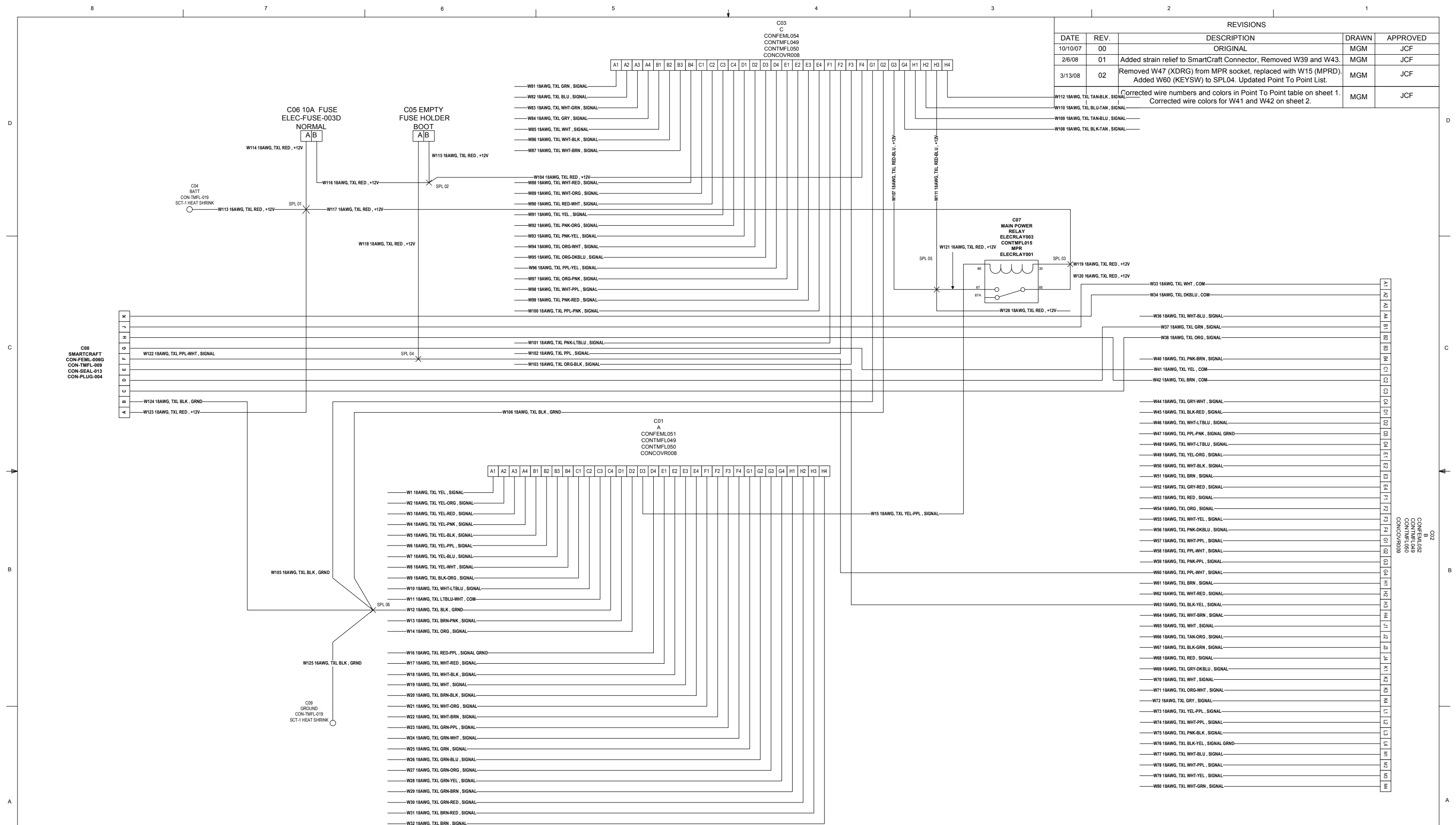
REVISIONS				
DATE	REV.	DESCRIPTION	DRAWN	APPROVED
10/10/07	00	ORIGINAL	MGM	JCF
2/6/08	01	Added strain relief to SmartCraft Connector, Removed W39 and W43.	MGM	JCF
3/13/08	02	Removed W47 (XDRG) from MPR socket, replaced with W15 (MPRD). Added W60 (KEYSW) to SPL04. Updated Point To Point List.	MGM	JCF
4/17/08	03	Corrected wire numbers and colors in Point To Point table on sheet 1. Corrected wire colors for W41 and W42 on sheet 2.	MGM	JCF

POINT TO POINT															
WIRE #	GAUGE	COLOR	TYPE	FROM	PIN1	TO	PIN2	WIRE #	GAUGE	COLOR	TYPE	FROM	PIN1	TO	PIN2
1	18AWG	YEL	TXL	C01	A1	FLYING LEAD	--	65	18AWG	WHT	TXL	C02	J1	FLYING LEAD	--
2	18AWG	YEL-ORG	TXL	C01	A2	FLYING LEAD	--	66	18AWG	TAN-ORG	TXL	C02	J2	FLYING LEAD	--
3	18AWG	YEL-RED	TXL	C01	A3	FLYING LEAD	--	67	18AWG	BLK-GRN	TXL	C02	J3	FLYING LEAD	--
4	18AWG	YEL-PNK	TXL	C01	A4	FLYING LEAD	--	68	18AWG	RED	TXL	C02	J4	FLYING LEAD	--
5	18AWG	YEL-BLK	TXL	C01	B1	FLYING LEAD	--	69	18AWG	GRY-DKBLU	TXL	C02	K1	FLYING LEAD	--
6	18AWG	YEL-PPL	TXL	C01	B2	FLYING LEAD	--	70	18AWG	WHT	TXL	C02	K2	FLYING LEAD	--
7	18AWG	YEL-BLU	TXL	C01	B3	FLYING LEAD	--	71	18AWG	ORG-WHT	TXL	C02	K3	FLYING LEAD	--
8	18AWG	YEL-WHT	TXL	C01	B4	FLYING LEAD	--	72	18AWG	GRY	TXL	C02	K4	FLYING LEAD	--
9	18AWG	BLK-ORG	TXL	C01	C1	FLYING LEAD	--	73	18AWG	YEL-PPL	TXL	C02	L1	FLYING LEAD	--
10	18AWG	WHT-TBLU	TXL	C01	C2	FLYING LEAD	--	74	18AWG	WHT-PPL	TXL	C02	L2	FLYING LEAD	--
11	18AWG	LTBLU-WHT	TXL	C01	C3	FLYING LEAD	--	75	18AWG	PNK-BLK	TXL	C02	L3	FLYING LEAD	--
12	18AWG	BLK	TXL	C01	C4	SPL06	D	76	18AWG	BLK-YEL	TXL	C02	L4	FLYING LEAD	--
13	18AWG	BRN-PNK	TXL	C01	D1	FLYING LEAD	--	77	18AWG	WHT-BLU	TXL	C02	M1	FLYING LEAD	--
14	18AWG	ORG	TXL	C01	D2	FLYING LEAD	--	78	18AWG	WHT-PPL	TXL	C02	M2	FLYING LEAD	--
15	18AWG	YEL-PPL	TXL	C01	D3	C07	86	79	18AWG	WHT-YEL	TXL	C02	M3	FLYING LEAD	--
16	18AWG	RED-PPL	TXL	C01	D4	FLYING LEAD	--	80	18AWG	WHT-GRN	TXL	C02	M4	FLYING LEAD	--
17	18AWG	WHT-RED	TXL	C01	E1	FLYING LEAD	--	81	18AWG	GRN	TXL	C03	A1	FLYING LEAD	--
18	18AWG	WHT-BLK	TXL	C01	E2	FLYING LEAD	--	82	18AWG	BLU	TXL	C03	A2	FLYING LEAD	--
19	18AWG	WHT	TXL	C01	E3	FLYING LEAD	--	83	18AWG	WHT-GRN	TXL	C03	A3	FLYING LEAD	--
20	18AWG	BRN-BLK	TXL	C01	E4	FLYING LEAD	--	84	18AWG	GRY	TXL	C03	A4	FLYING LEAD	--
21	18AWG	WHT-ORG	TXL	C01	F1	FLYING LEAD	--	85	18AWG	WHT	TXL	C01	B1	FLYING LEAD	--
22	18AWG	WHT-BRN	TXL	C01	F2	FLYING LEAD	--	86	18AWG	WHT-BLK	TXL	C03	B2	FLYING LEAD	--
23	18AWG	GRN-PPL	TXL	C01	F3	FLYING LEAD	--	87	18AWG	WHT-BRN	TXL	C03	B3	FLYING LEAD	--
24	18AWG	GRN-WHT	TXL	C01	F4	FLYING LEAD	--	88	18AWG	WHT-RED	TXL	C03	B4	FLYING LEAD	--
25	18AWG	GRN	TXL	C01	G1	FLYING LEAD	--	89	18AWG	WHT-ORG	TXL	C03	C1	FLYING LEAD	--
26	18AWG	GRN-BLU	TXL	C01	G2	FLYING LEAD	--	90	18AWG	RED-WHT	TXL	C03	C2	FLYING LEAD	--
27	18AWG	GRN-ORG	TXL	C01	G3	FLYING LEAD	--	91	18AWG	YEL	TXL	C03	C3	FLYING LEAD	--
28	18AWG	GRN-YEL	TXL	C01	G4	FLYING LEAD	--	92	18AWG	PNK-ORG	TXL	C03	C4	FLYING LEAD	--
29	18AWG	GRN-BRN	TXL	C01	H1	FLYING LEAD	--	93	18AWG	PNK-YEL	TXL	C03	D1	FLYING LEAD	--
30	18AWG	GRN-RED	TXL	C01	H2	FLYING LEAD	--	94	18AWG	ORG-WHT	TXL	C03	D2	FLYING LEAD	--
31	18AWG	BRN-RED	TXL	C01	H3	FLYING LEAD	--	95	18AWG	ORG-DKBLU	TXL	C03	D3	FLYING LEAD	--
32	18AWG	BRN	TXL	C01	H4	FLYING LEAD	--	96	18AWG	PPL-YEL	TXL	C03	D4	FLYING LEAD	--
33	18AWG	WHT	TXL	C02	A1	C08	J	97	18AWG	ORG-PNK	TXL	C03	E1	FLYING LEAD	--
34	18AWG	DKBLU	TXL	C02	A2	C08	K	98	18AWG	WHT-PPL	TXL	C03	E2	FLYING LEAD	--
35	18AWG	WHT-BLU	TXL	C02	A4	FLYING LEAD	--	99	18AWG	PNK-RED	TXL	C03	E3	FLYING LEAD	--
36	18AWG	GRN	TXL	C02	B1	C08	D	100	18AWG	PPL-PNK	TXL	C03	E4	FLYING LEAD	--
37	18AWG	ORG	TXL	C02	B3	C08	C	101	18AWG	PNK-LTBLU	TXL	C03	F1	FLYING LEAD	--
38	18AWG	GRN	TXL	C02	B4	FLYING LEAD	--	102	18AWG	PPL	TXL	C03	F2	FLYING LEAD	--
39	18AWG	YEL	TXL	C02	C1	C08	G	103	18AWG	ORG-BLK	TXL	C03	F3	FLYING LEAD	--
40	18AWG	BRN	TXL	C02	C2	C08	H	104	18AWG	RED	TXL	C03	F4	SPL02	C
41	18AWG	GRY-WHT	TXL	C02	C4	FLYING LEAD	--	105	18AWG	BLK	TXL	C03	G1	SPL06	B
44	18AWG	BLK-RED	TXL	C02	D1	FLYING LEAD	--	106	18AWG	BLK	TXL	C03	G2	SPL06	C
46	18AWG	WHT-LTBLU	TXL	C02	D2	FLYING LEAD	--	107	18AWG	RED-BLU	TXL	C03	G3	SPL05	A
47	18AWG	PPL-PNK	TXL	C02	D3	FLYING LEAD	--	108	18AWG	BLK-TAN	TXL	C03	G4	FLYING LEAD	--
48	18AWG	WHT-LTBLU	TXL	C02	D4	FLYING LEAD	--	109	18AWG	TAN-BLU	TXL	C03	H1	FLYING LEAD	--
49	18AWG	YEL-ORG	TXL	C02	E1	FLYING LEAD	--	110	18AWG	BLU-TAN	TXL	C03	H2	FLYING LEAD	--
50	18AWG	WHT-BLK	TXL	C02	E2	FLYING LEAD	--	111	18AWG	RED-BLU	TXL	C03	H3	SPL05	B
51	18AWG	BRN	TXL	C02	E3	FLYING LEAD	--	112	18AWG	TAN-BLK	TXL	C03	H4	FLYING LEAD	--
52	18AWG	GRY-RED	TXL	C02	E4	FLYING LEAD	--	113	18AWG	RED	TXL	C04	A	SPL01	A
53	18AWG	RED	TXL	C02	F1	FLYING LEAD	--	114	18AWG	RED	TXL	SPL01	B	C06	A
54	18AWG	ORG	TXL	C02	F2	FLYING LEAD	--	115	18AWG	RED	TXL	SPL02	A	C05	B
55	18AWG	WHT-YEL	TXL	C02	F3	FLYING LEAD	--	116	18AWG	RED	TXL	C06	B	SPL02	B
56	18AWG	PNK-DKBLU	TXL	C02	F4	FLYING LEAD	--	117	18AWG	RED	TXL	SPL01	C	SPL03	A
57	18AWG	WHT-PPL	TXL	C02	G1	FLYING LEAD	--	118	18AWG	RED	TXL	SPL04	A	C05	A
58	18AWG	PPL-WHT	TXL	C02	G2	FLYING LEAD	--	119	18AWG	RED	TXL	SPL03	B	C07	30
59	18AWG	PNK-PPL	TXL	C02	G3	FLYING LEAD	--	120	18AWG	RED	TXL	SPL03	C	C07	85
60	18AWG	PPL-WHT	TXL	C02	G4	SPL04	B	121	18AWG	RED	TXL	SPL05	B	C07	87
61	18AWG	BRN	TXL	C02	H1	FLYING LEAD	--	122	18AWG	PPL	TXL	C08	F	SPL04	C
62	18AWG	WHT-RED	TXL	C02	H2	FLYING LEAD	--	123	18AWG	RED	TXL	C08	A	SPL01	D
63	18AWG	BLK-YEL	TXL	C02	H3	C08	E	124	18AWG	BLK	TXL	C08	B	SPL06	A
64	18AWG	WHT-BRN	TXL	C02	H4	FLYING LEAD	--	125	18AWG	BLK	TXL	C09	--	SPL06	A
								126	18AWG	RED	TXL	SPL05	D	FLYING LEAD	--

ECU CONNECTORS	
CONNECTOR	MOTOTRON PART NUMBER
C01	CONFEML051
C02	CONFEML052
C03	CONFEML054

UNLESS OTHERWISE SPECIFIED: DIMENSIONS ARE IN INCHES TOLERANCES: FRACTIONAL ± .06 ANGULAR: MACHES ± .5° TWO PLACE DECIMAL ± .02 THREE PLACE DECIMAL ± .008	<table border="1"> <tr> <th>DATE</th> <th>NAME</th> </tr> <tr> <td>DRAWN 10/10/07</td> <td>MGM</td> </tr> <tr> <td>CHECKED 10/10/07</td> <td>JCF</td> </tr> <tr> <td>ENG APPR. 10/10/07</td> <td>JCF</td> </tr> </table>	DATE	NAME	DRAWN 10/10/07	MGM	CHECKED 10/10/07	JCF	ENG APPR. 10/10/07	JCF		
DATE	NAME										
DRAWN 10/10/07	MGM										
CHECKED 10/10/07	JCF										
ENG APPR. 10/10/07	JCF										
INTERPRET GEOMETRIC TOLERANCING PER: XXX	<table border="1"> <tr> <th>DATE</th> <th>NAME</th> </tr> <tr> <td>DRAWN 10/10/07</td> <td>MGM</td> </tr> <tr> <td>CHECKED 10/10/07</td> <td>JCF</td> </tr> <tr> <td>ENG APPR. 10/10/07</td> <td>JCF</td> </tr> </table>	DATE	NAME	DRAWN 10/10/07	MGM	CHECKED 10/10/07	JCF	ENG APPR. 10/10/07	JCF	ECM55541120902 DEVELOPMENT HARNESS	
DATE	NAME										
DRAWN 10/10/07	MGM										
CHECKED 10/10/07	JCF										
ENG APPR. 10/10/07	JCF										
MATERIAL: ---	<table border="1"> <tr> <th>SIZE</th> <th>DWG. NO.</th> <th>REV</th> </tr> <tr> <td>D</td> <td>HARNP112002</td> <td>03</td> </tr> </table>	SIZE	DWG. NO.	REV	D	HARNP112002	03	<table border="1"> <tr> <td>SCALE: 1:2</td> <td>WEIGHT:</td> <td>SHEET 1 OF 3</td> </tr> </table>	SCALE: 1:2	WEIGHT:	SHEET 1 OF 3
SIZE	DWG. NO.	REV									
D	HARNP112002	03									
SCALE: 1:2	WEIGHT:	SHEET 1 OF 3									

REVISIONS				
DATE	REV.	DESCRIPTION	DRAWN	APPROVED
10/10/07	00	ORIGINAL	MGM	JCF
2/6/08	01	Added strain relief to SmartCraft Connector, Removed W39 and W43.	MGM	JCF
3/13/08	02	Removed W47 (XDRG) from MPR socket, replaced with W15 (MPRD). Added W60 (KEYSW) to SPL04. Updated Point To Point List.	MGM	JCF
		Corrected wire numbers and colors in Point To Point table on sheet 1. Corrected wire colors for W41 and W42 on sheet 2.	MGM	JCF



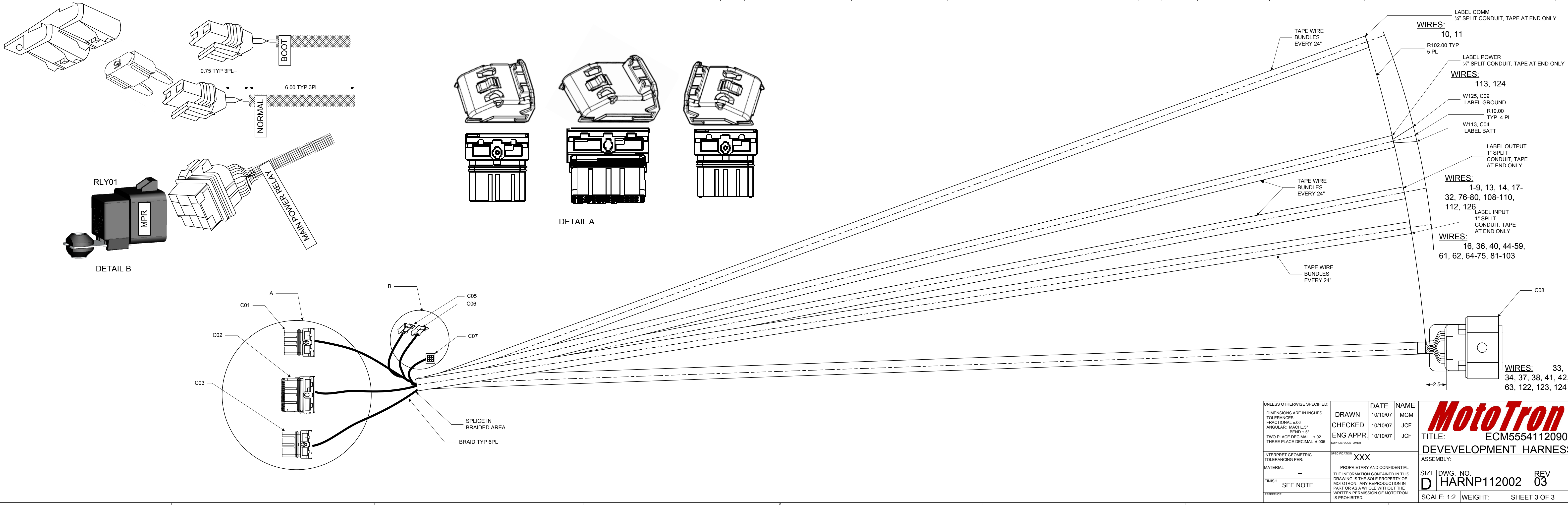
UNLESS OTHERWISE SPECIFIED: DIMENSIONS ARE IN INCHES TOLERANCES: FRACTIONAL ± .06 ANGULAR: BEND ± .5° TWO PLACE DECIMAL ± .02 THREE PLACE DECIMAL ± .009	DRAWN	10/10/07	MGM
	CHECKED	10/10/07	JCF
	ENG APPR	10/10/07	JCF
INTERPRET GEOMETRIC TOLERANCING PER: XXX	MATERIAL: PROPRIETARY AND CONFIDENTIAL		
FINISH: SEE NOTE	THE INFORMATION CONTAINED IN THIS DRAWING IS THE SOLE PROPERTY OF MOTO TRON. ANY REPRODUCTION IN PART OR AS A WHOLE WITHOUT THE WRITTEN PERMISSION OF MOTO TRON IS PROHIBITED.		
TITLE: ECM55541120902		DEVELOPMENT HARNESS	
SIZE DWG. NO. D HARNP112002	REV 03	SCALE: 1:2	WEIGHT: SHEET 2 OF 3



QTY	UNIT	PART NUMBER	MANUFACTURER	MOTOTRON P/N	DESCRIPTION
C01 LABEL ECM A					
1	PC	989442001	MOLEX	CONFEML051	CONNECTOR, FEMALE, 32 POS.
8	PC	98915-1029	MOLEX	CONTMFL049	CONNECTOR, TERMINAL, FEMALE
21	PC	98958-1212	MOLEX	CONTMFL050	CONNECTOR, TERMINAL, FEMALE
1	PC	EM-98644001-1-305070	MOLEX	CONCOVR008	CONNECTOR COVER
C02 LABEL ECM B					
1	PC	989502003	MOLEX	CONFEML052	CONNECTOR, FEMALE, 48 POS.
8	PC	98915-1029	MOLEX	CONTMFL049	CONNECTOR, TERMINAL, FEMALE
40	PC	98958-1212	MOLEX	CONTMFL050	CONNECTOR, TERMINAL, FEMALE
1	PC	EM-98655001-D-1-243970	MOLEX	CONCOVR009	CONNECTOR COVER
C03 LABEL ECM C					
1	PC	989443002	MOLEX	CONFEML054	CONNECTOR, FEMALE, 32 POS.
8	PC	98915-1029	MOLEX	CONTMFL049	CONNECTOR, TERMINAL, FEMALE
24	PC	98958-1212	MOLEX	CONTMFL050	CONNECTOR, TERMINAL, FEMALE
1	PC	EM-98644001-1-305070	MOLEX	CONCOVR008	CONNECTOR COVER
C04 LABEL BATT					
1	PC			CONTMFL019	CONNECTOR, 1/4" RING LUG
C05 LABEL BOOT					
2	PC	12066614	PACKARD ELECTRIC	CONTMFL015	CONNECTOR, TERMINAL, FEMALE
1	PC	12033769	PACKARD ELECTRIC	CONFEML018	CONNECTOR, ATO1 FUSE, EMPTY
1	PC	12059426	PACKARD ELECTRIC	CONCOVR004	COVER, MATES WITH C05 & C06
C06 LABEL NORMAL					
2	PC	12066614	PACKARD ELECTRIC	CONTMFL015	CONNECTOR, TERMINAL, FEMALE
1	PC	12033769	PACKARD ELECTRIC	CONFEML018	CONNECTOR, ATO1 FUSE
1	PC	ATO-15	BUSS		FUSE, 15 AMP
C07 LABEL MAIN POWER RELAY					
1	PC	12077951	PACKARD ELECTRIC	ELECRLAY003	ELECTRIC RELAY SOCKET, WHITE
4	PC	12066614	PACKARD ELECTRIC	CONTMFL015	CONNECTOR, TERMINAL, FEMALE
C08 LABEL SMARTCRAFT					
1	PC	15326842	PACKARD ELECTRIC	CONFEML006G	CONNECTOR, FEMALE, 10 POS
8	PC	12160223	PACKARD ELECTRIC	CONTMFL009	CONNECTOR, TERMINAL, FEMALE
8	PC	15366021	PACKARD ELECTRIC	CONSEAL013	CONNECTOR WIRE SEAL
2	PC	15305171	PACKARD ELECTRIC	CONPLUG004	CONNECTOR PLUG
1	PC			CONSTRN001	CONNECTOR STRAIN RELIEF
C10 LABEL GROUND					
1	PC			CONTMFL019	CONNECTOR, 1/4" RING LUG
RLY01 LABEL MPR					
1	PC	AZ973-1C-12DC4	ZETTLER	ELECRLAY00100	RELAY, MATES WITH C07

REVISIONS				
DATE	REV.	DESCRIPTION	DRAWN	APPROVED
10/10/07	00	ORIGINAL	MGM	JCF
2/6/08	01	Added strain relief to SmartCraft Connector, Removed W39 and W43.	MGM	JCF
3/13/08	02	Removed W47 (XDRG) from MPR socket, replaced with W15 (MPRD). Added W60 (KEYSW) to SPL04. Updated Point To Point List.	MGM	JCF

QTY	UNIT	PART NUMBER	MANUFACTURER	DESCRIPTION	QTY	UNIT	PART NUMBER	MANUFACTURER	DESCRIPTION
WIRE									
AR	PC			WIRE, BULK, 18AWG, TXL, BLK	AR	PC			WIRE, BULK, 18AWG, TXL, PNK-LTBLU
AR	PC			WIRE, BULK, 18AWG, TXL, BLK-GRN	AR	PC			WIRE, BULK, 18AWG, TXL, PNK-BRN
AR	PC			WIRE, BULK, 18AWG, TXL, BLK-ORG	AR	PC			WIRE, BULK, 18AWG, TXL, PNK-ORG
AR	PC			WIRE, BULK, 18AWG, TXL, BLK-RED	AR	PC			WIRE, BULK, 18AWG, TXL, PNK-PPL
AR	PC			WIRE, BULK, 18AWG, TXL, BLK-TAN	AR	PC			WIRE, BULK, 18AWG, TXL, PNK-YEL
AR	PC			WIRE, BULK, 18AWG, TXL, BLK-YEL	AR	PC			WIRE, BULK, 18AWG, TXL, PNK-DKBLU
AR	PC			WIRE, BULK, 18AWG, TXL, BLU	AR	PC			WIRE, BULK, 18AWG, TXL, PPL
AR	PC			WIRE, BULK, 18AWG, TXL, BLU-TAN	AR	PC			WIRE, BULK, 18AWG, TXL, PPL-PNK
AR	PC			WIRE, BULK, 18AWG, TXL, DKBLU	AR	PC			WIRE, BULK, 18AWG, TXL, PPL-WHT
AR	PC			WIRE, BULK, 18AWG, TXL, DKBLU-WHT	AR	PC			WIRE, BULK, 18AWG, TXL, PPL-YEL
AR	PC			WIRE, BULK, 18AWG, TXL, LTBLU-WHT	AR	PC			WIRE, BULK, 18AWG, TXL, RED
AR	PC			WIRE, BULK, 18AWG, TXL, BRN	AR	PC			WIRE, BULK, 18AWG, TXL, RED-BLU
AR	PC			WIRE, BULK, 18AWG, TXL, BRN-BLK	AR	PC			WIRE, BULK, 18AWG, TXL, RED-WHT
AR	PC			WIRE, BULK, 18AWG, TXL, BRN-PNK	AR	PC			WIRE, BULK, 18AWG, TXL, TAN-BLK
AR	PC			WIRE, BULK, 18AWG, TXL, BRN-RED	AR	PC			WIRE, BULK, 18AWG, TXL, TAN-BLU
AR	PC			WIRE, BULK, 18AWG, TXL, GRN	AR	PC			WIRE, BULK, 18AWG, TXL, WHT
AR	PC			WIRE, BULK, 18AWG, TXL, GRN-BLU	AR	PC			WIRE, BULK, 18AWG, TXL, WHT-BLK
AR	PC			WIRE, BULK, 18AWG, TXL, GRN-BRN	AR	PC			WIRE, BULK, 18AWG, TXL, WHT-YEL
AR	PC			WIRE, BULK, 18AWG, TXL, GRN-ORG	AR	PC			WIRE, BULK, 18AWG, TXL, WHT-GRN
AR	PC			WIRE, BULK, 18AWG, TXL, GRN-PPL	AR	PC			WIRE, BULK, 18AWG, TXL, WHT-ORG
AR	PC			WIRE, BULK, 18AWG, TXL, GRN-RED	AR	PC			WIRE, BULK, 18AWG, TXL, WHT-LTBLU
AR	PC			WIRE, BULK, 18AWG, TXL, GRN-WHT	AR	PC			WIRE, BULK, 18AWG, TXL, WHT-DKBLU
AR	PC			WIRE, BULK, 18AWG, TXL, GRN-YEL	AR	PC			WIRE, BULK, 18AWG, TXL, WHT-RED
AR	PC			WIRE, BULK, 18AWG, TXL, GRY	AR	PC			WIRE, BULK, 18AWG, TXL, WHT-BRN
AR	PC			WIRE, BULK, 18AWG, TXL, GRY-DKBL	AR	PC			WIRE, BULK, 18AWG, TXL, WHT-BLU
AR	PC			WIRE, BULK, 18AWG, TXL, GRY-RED	AR	PC			WIRE, BULK, 18AWG, TXL, WHT-PPL
AR	PC			WIRE, BULK, 18AWG, TXL, GRY-WHT	AR	PC			WIRE, BULK, 18AWG, TXL, YEL
AR	PC			WIRE, BULK, 18AWG, TXL, ORG	AR	PC			WIRE, BULK, 18AWG, TXL, YEL-BLU
AR	PC			WIRE, BULK, 18AWG, TXL, ORG-BLK	AR	PC			WIRE, BULK, 18AWG, TXL, YEL-PPL
AR	PC			WIRE, BULK, 18AWG, TXL, ORG-PNK	AR	PC			WIRE, BULK, 18AWG, TXL, YEL-ORG
AR	PC			WIRE, BULK, 18AWG, TXL, ORG-WHT	AR	PC			WIRE, BULK, 18AWG, TXL, YEL-BLK
AR	PC			WIRE, BULK, 18AWG, TXL, ORG-DKBLU	AR	PC			WIRE, BULK, 18AWG, TXL, YEL-PNK
AR	PC			WIRE, BULK, 18AWG, TXL, PNK-BLK	AR	PC			WIRE, BULK, 18AWG, TXL, YEL-RED
AR	PC			WIRE, BULK, 18AWG, TXL, PNK-DKBLU	AR	PC			WIRE, BULK, 18AWG, TXL, YEL-WHT



UNLESS OTHERWISE SPECIFIED:
 DIMENSIONS ARE IN INCHES
 TOLERANCES:
 FRACTIONAL ±.06
 ANGULAR .MACH±.5°
 HOLE ±.015
 TWO PLACE DECIMAL ±.02
 THREE PLACE DECIMAL ±.005

INTERPRET GEOMETRIC TOLERANCING PER: XXX

MATERIAL: ---
 FINISH: SEE NOTE

DATE: 10/10/07
 NAME: MGM

DATE: 10/10/07
 NAME: JCF

DATE: 10/10/07
 NAME: JCF

TITLE: ECM55541120902
 DEVEVELOPMENT HARNESS ASSEMBLY

SIZE: D
 DWG. NO.: HARNP112002
 SCALE: 1:2

REV: 03
 SHEET 3 OF 3

MotoTron