

REVISION HISTORY			
REV	DESCRIPTION	DATE	APPROVED
E	EC 1143738	DPENNI	DEC-2010 PJANIK

D

C

B

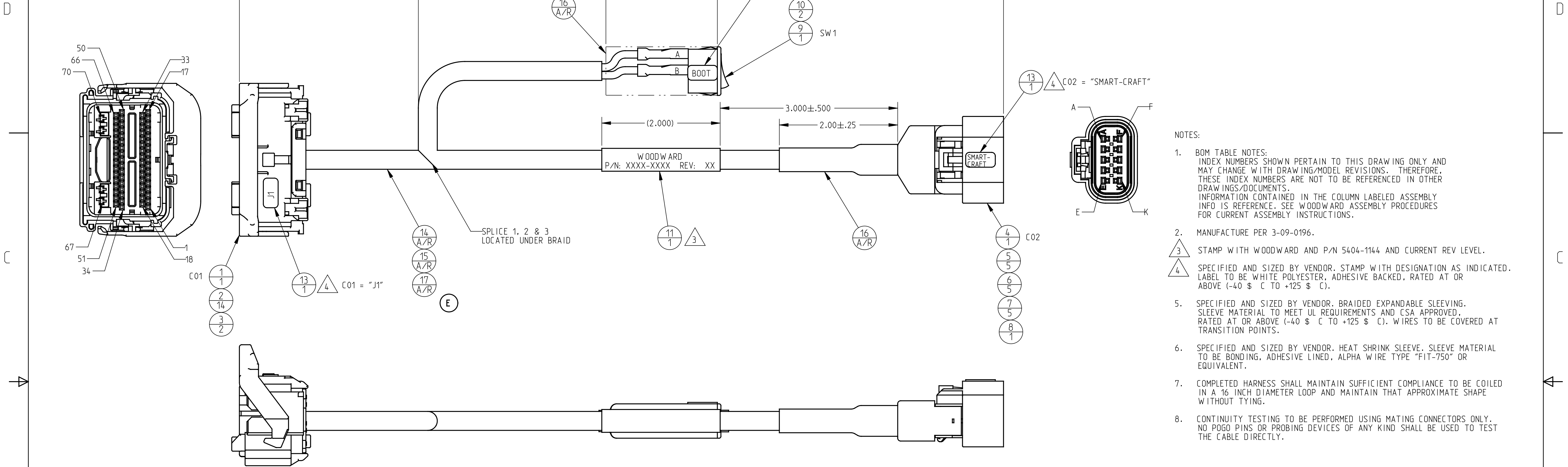
A

D

C

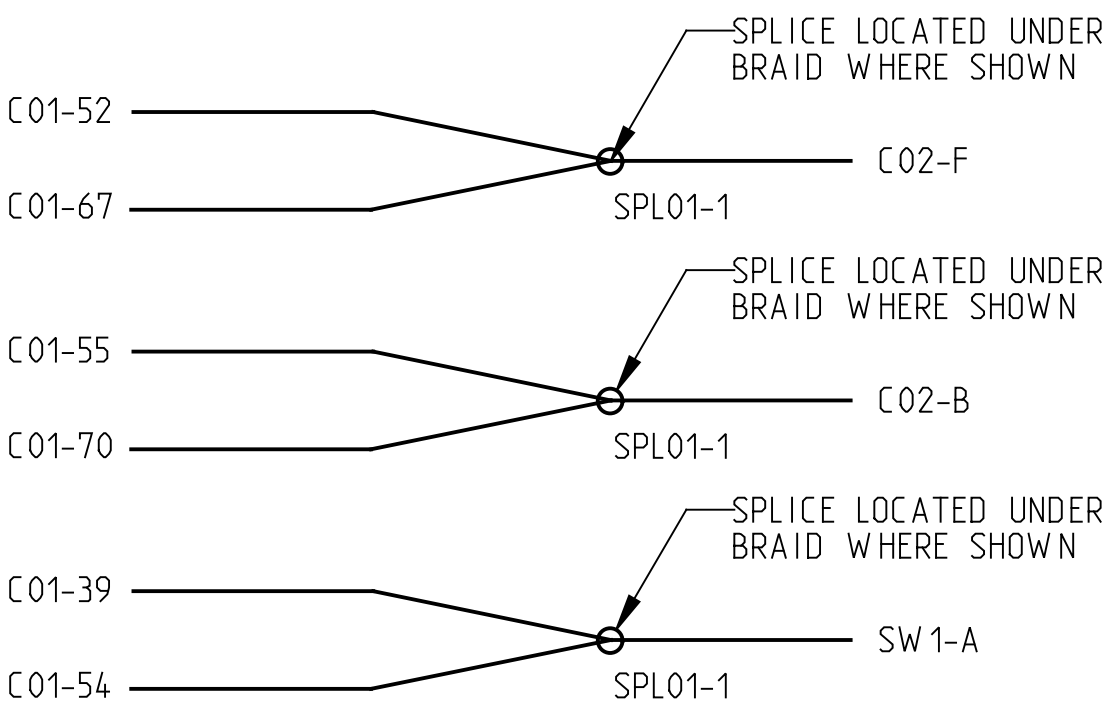
B

A



- NOTES:
- BOM TABLE NOTES:
INDEX NUMBERS SHOWN PERTAIN TO THIS DRAWING ONLY AND MAY CHANGE WITH DRAWING/MODEL REVISIONS. THEREFORE, THESE INDEX NUMBERS ARE NOT TO BE REFERENCED IN OTHER DRAWINGS/DOCUMENTS.
INFORMATION CONTAINED IN THE COLUMN LABELED ASSEMBLY INFO IS REFERENCE. SEE WOODWARD ASSEMBLY PROCEDURES FOR CURRENT ASSEMBLY INSTRUCTIONS.
 - MANUFACTURE PER 3-09-0196.
 - STAMP WITH WOODWARD AND P/N 5404-1144 AND CURRENT REV LEVEL.
 - SPECIFIED AND SIZED BY VENDOR. STAMP WITH DESIGNATION AS INDICATED. LABEL TO BE WHITE POLYESTER, ADHESIVE BACKED, RATED AT OR ABOVE (-40 \$ C TO +125 \$ C).
 - SPECIFIED AND SIZED BY VENDOR. BRAIDED EXPANDABLE SLEEVING. SLEEVE MATERIAL TO MEET UL REQUIREMENTS AND CSA APPROVED, RATED AT OR ABOVE (-40 \$ C TO +125 \$ C). WIRES TO BE COVERED AT TRANSITION POINTS.
 - SPECIFIED AND SIZED BY VENDOR. HEAT SHRINK SLEEVE. SLEEVE MATERIAL TO BE BONDING, ADHESIVE LINED, ALPHA WIRE TYPE "FIT-750" OR EQUIVALENT.
 - COMPLETED HARNESS SHALL MAINTAIN SUFFICIENT COMPLIANCE TO BE COILED IN A 16 INCH DIAMETER LOOP AND MAINTAIN THAT APPROXIMATE SHAPE WITHOUT TYING.
 - CONTINUITY TESTING TO BE PERFORMED USING MATING CONNECTORS ONLY. NO POGO PINS OR PROBING DEVICES OF ANY KIND SHALL BE USED TO TEST THE CABLE DIRECTLY.

WIRE TO / FROM TABLE							
WIRE NO.	FROM CONN	FROM PIN NO.	TO CONN	TO PIN NO.	INDEX NUMBER (WIRE P/N)	COLOR	SIGNAL
1	SPL01	1	C01	52	15	WHT	+12V
2	SPL01	1	C01	67	14 (16AWG)		+12V
3	SPL01	1	C02	F	15		+12V
4	SPL02	1	C01	55	15		GND
5	SPL02	1	C01	70	14 (16AWG)		GND
6	SPL02	1	C02	B	15		GND
7	SPL03	1	C01	39			+5V
8	SPL03	1	C01	54			+5V
9	SPL03	1	SW 1	A			+5V
10	C01	23	C02	J			COM
11	C01	24	C02	K			COM
12	C01	41	C02	E			SIGNAL
13	C01	51	SW 1	B		WHT	+5V



BOM BALLOON KEY

INDEX #
QTY

INDEX #	ITEM #	DESCRIPTION	QTY	ASSEMBLY INFO (See Notes)
1	1635-1772	CONNECTOR (CONFEMLO5600, CONNECTOR, ECM70 PIN FEMALE)	1	C01 (J1)
2	1602-1139	TERMINAL (RECEPTACLE, FEMALE, 70 PIN, 18-20 AWG)	14	
3	1602-1109	TERMINAL (CONTMFLO5500, 70 PIN FEMALE (LG PINS 67-70), 18-20AWG)	2	
4	1635-1737	CONNECTOR (CONFEMLO06G00, ASSEMBLY - 10 PIN)	1	C02 (SMART-CRAFT)
5	1602-1084	TERMINAL (CONTMFLO0900, CONNECTOR FEMALE (16-18 AWG))	5	
6	1391-0137	SEAL (CONSEALO1300, CONNECTOR - WIRE)	5	
7	1223-1346	PLUG (CONPLUG00400, CONNECTOR)	5	
8	1633-1002	STRAIN RELIEF (CONSTRN00100, CONNECTOR)	1	
9	1711-1170	SWITCH (ROCKER, SPST, ON-OFF, MOUSER 642-FMC12A220)	1	SW 1 (BOOT)
10	1602-1138	TERMINAL (RECEPTACLE, FAST-ON, .187, 22-18 AWG)	2	
11	3061-2014	LABEL (HEAT-SHRINKABLE POLYOLEFIN .500 I.D. TUBING)	1	
13	-	LABEL (ADHESIVE BACKED, (APPROX .25 X .50))		SPECIFIED BY VENDOR. SEE NOTE 4
14	2008-1302	WIRE (16AWG, TXL, WHT (T-2183))		BULK ITEM
15	2008-1259	WIRE (18AWG, TXL, WHT (T-2183))		BULK ITEM
16	-	SLEEVE (HEAT SHRINK, BONDING ADHESIVE LINED, BLACK)		
17	-	SLEEVE ((WIRE BUNDLE, BRAIDED, BLK/WHT STRIPE)		

THIS DRAWING OR ANY REPRODUCTION OF IT SHALL NOT BE USED FOR MANUFACTURE, PRODUCTION OR PROCUREMENT WITHOUT THE EXPRESS WRITTEN PERMISSION OF THE WOODWARD GOVERNOR COMPANY OR ONE OF ITS SUBSIDIARIES. USE OR REPRODUCTION FOR USE IN A NORMAL MANNER ASSOCIATED WITH GOODS OR SERVICE FURNISHED OR TENDERED BY WOODWARD GOVERNOR COMPANY OR ONE OF ITS SUBSIDIARIES, IS APPROVED.

DEFAULT TOLERANCES. ALL REQUIREMENTS WITHIN DRAWING BORDER HAVE PRECEDENCE.											
COAXIAL REQUIREMENTS .010 FIM	ALL DIMS ARE IN INCH	MATERIAL SUBSTITUTION PER FES-9000	THREADS PER SS-130	+.015 +-.005 ISO 13715	L-.015	UNDEFINED SYMBOLS PER SS-163	USE OF SPECIAL PROCESSES MUST COMPLY WITH DOC-9	SURFACE IMPERFECTIONS TO BE EVALUATED PER SS-199	UNDEFINED DRILL POINT ANGLE = 113°-180°	DEBURR PER FES-9005	250 SURFACE TEXTURE
UNSPECIFIED TOLERANCES .XX ±.03 .XXX ±.010 .XXXX ±.0005	MATERIALS: SEE BOM			UNLESS OTHERWISE SPECIFIED, DIMENSIONS ARE IN INCHES. DRAWING DEFINITIONS AND TOLERANCES SHALL BE FOUND IN SS-142			APPROVED CSUNDB CHECKED CSUNDB DRAWN RIKNAB	DATE JAN-2010 DATE JAN-2010 DATE JAN-2010	W. WOODWARD FORT COLLINS COLORADO USA		
ANGLES ±5°	THIRD ANGLE PROJECTION			HARNESS, HARNECM029, ECM70 PROGRAMMING			TITLE			REV E	
		SIZE D		CAGE CODE 31361		DWG NO 5404-1144		SHEET 1 OF 1		PROE	
		SCALE NTS									